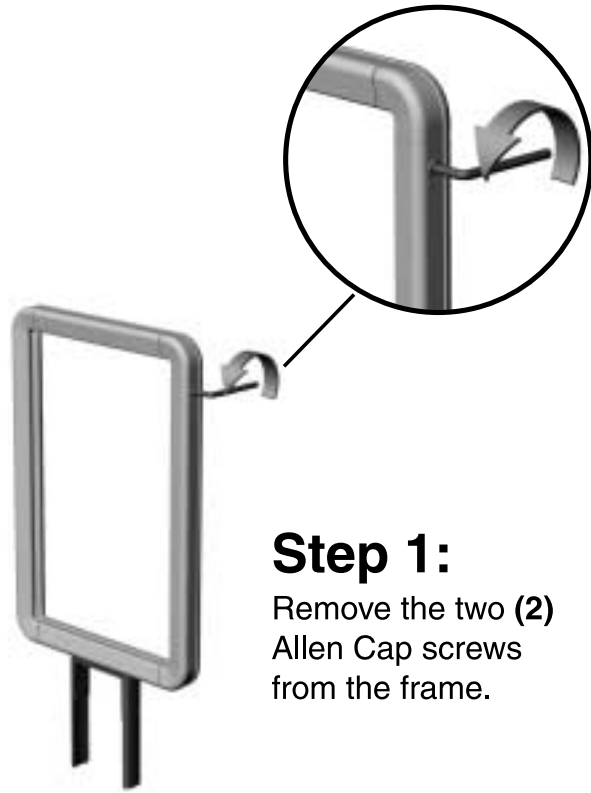


# Sign Insert Instructions



**Step 1:**  
Remove the two (2)  
Allen Cap screws  
from the frame.



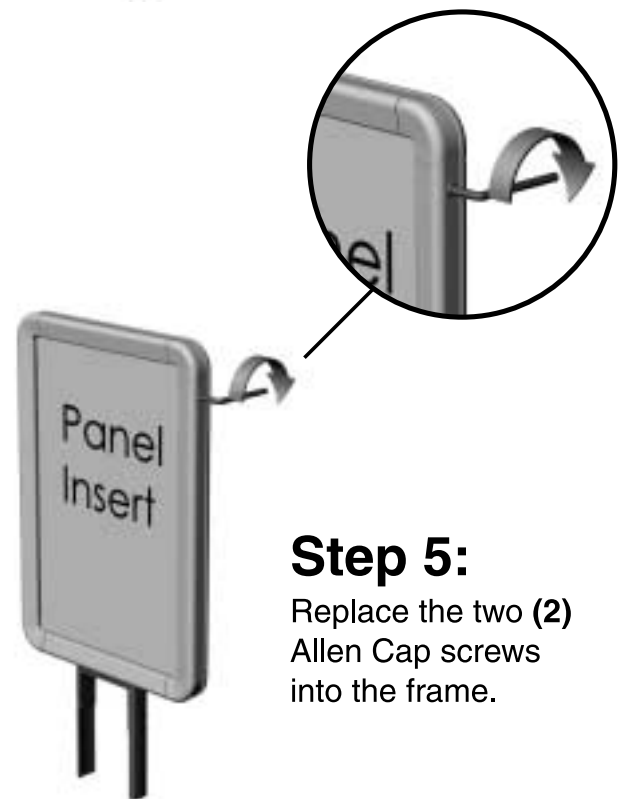
**Step 2:**  
Lift the **TOP FRAME ASSEMBLY** up off  
the **LOWER FRAME**.



**Step 3:**  
Slide Panel  
Insert into frame  
channels.



**Step 4:**  
Replace the **TOP FRAME ASSEMBLY**  
onto the lower frame.



**Step 5:**  
Replace the two (2)  
Allen Cap screws  
into the frame.

 **Lavi  
Industries**

*Products for People and the Places they go™*

**(800) 624-6225**

www.lavi.com