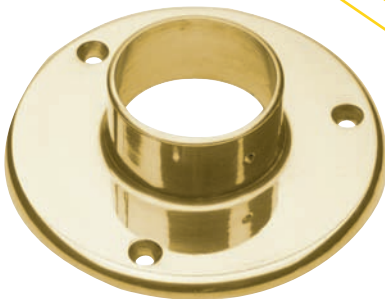


# Flanges

*Solid Brass and Stainless Steel Components*



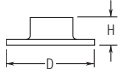
*Wall and floor flanges for almost any mounting condition.*

# Flanges

## Solid Brass and Stainless Steel Components

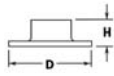
**Standard Finishes & Materials:** Polished Brass, Chrome, Polished Stainless Steel, & Satin Stainless Steel.  
In addition to our standard finishes, Brass Clear Coat & Lido Tone finishes may be available. Please call for details.

	BRASS
	BRASS & CHROME
	STAINLESS STEEL
	BRASS & STAINLESS STEEL



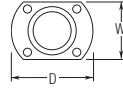
**500**  
2" Wall Flange

Item#	Tubing	D	H
● 500/1	1"	2"	7/8"
● 500U/1	1"		



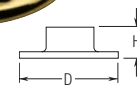
**502/510**  
3" Wall Flange

Item#	Tubing	D	H
● 502/1	1"	3"	1 1/2"
● 510/1H	1 1/2"	3"	1 1/4"
● 510U/1H	1 1/2"	3"	1 1/4"



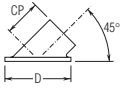
**511/531**  
Cut Wall Flange

Item#	Tubing	D	W
● 511/1H	1 1/2"	3"	2"
● 531/2	2"	4"	2 1/2"



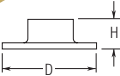
**512**  
4" Floor Flange

Item#	Tubing	D	H
● 512/1H	1 1/2"	4"	1 1/4"



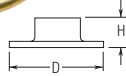
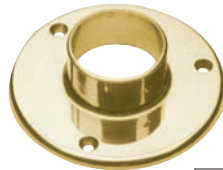
**515/535**  
Angle Flange 45°

Item#	Tubing	D	CP
● 515/1H	1 1/2"	3"	2 1/8"
● 535/2	2"	4"	2 1/8"



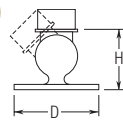
**530/550**  
4" & 5 1/2" Wall Flanges

Item#	Tubing	D	H
● 530/2	2"	4"	1 1/4"
● 550/2H	2 1/2"	5 1/2"	1 1/2"
● 550/3	3"	5 1/2"	1 1/2"



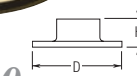
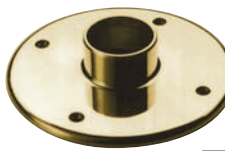
**532**  
5" Floor Flange

Item#	Tubing	D	H
● 532/2	2"	5"	1 3/8"



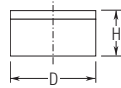
**533**  
Adjustable Angle Flange

Item#	Tubing	D	H
● 533/2	2"	4"	2 9/16"



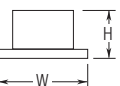
**552/560**  
7" Floor Flange

Item#	Tubing	D	H
● 552/2H	2 1/2"	7"	1 1/2"
● 560/3	3"	7"	1 1/2"



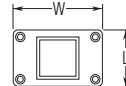
**580/581/582/585**  
Socket Flange

Item#	Tubing	D	H
● 580/1	1"	1 1/8"	3/4"
● 581/1Q	1 1/4"	1 3/8"	1 3/16"
● 582/1H	1 1/2"	1 5/8"	7/8"
● 585	1 5/16"	1 5/8"	7/8"



**590**  
Flange for Square Tubing

Item#	Tubing	W	H
● 590/1H	1 1/2"	3 1/2"	1 1/2"
● 590/2	2"	4"	1 1/2"



**591**  
Cut Flange for Square Tubing

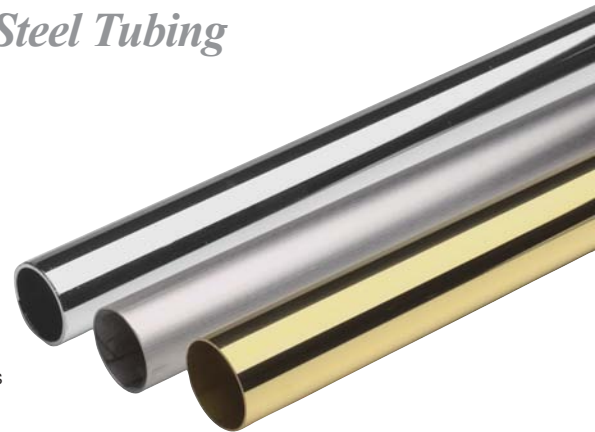
Item#	Tubing	W	L
● 591/1H	1 1/2"	3 1/2"	2 1/2"
● 591/2	2"	4"	3 1/4"

## Brass & Stainless Steel Tubing

Item#	Dia.	Thickness
A100	1"	.050
A110	1 1/2"	.050
A120	2"	.050
A140	3"	.050

Available in all finishes.

Polished Stainless Steel			Polished Chrome
Polished Brass			Satin Stainless Steel
	Clear Coat Brass		



Please check our current price list for ongoing information updates.