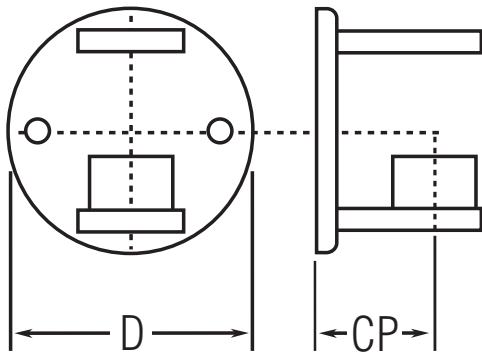


PART# WA103 424

Fascia Mount Bracket, 1.67"x 0.08"



D	4.33"
CP	1.97"

MATERIAL & AVAILABLE FINISHES			
	BRASS	304 SST	316 SST
Polished			
Satin			√
Clear Coat			

MATERIAL USAGE			
	BRASS	304 SST	316 SST
Indoor			√
Outdoor			√

MATERIAL CARE	
Stainless Steel	Use metal cleaner and apply with a damp, soft cloth.

INSTALLATION	Mount bracket to vertical surface (stair stringer, wall) using hardware adequate for material that the bracket is being mounted on. Slide railing post tube through top hole and rest it on the lower end cap. Tighten tube into place with set screw.
HARDWARE INCLUDED	---
USE TOGETHER WITH	1-67" OD stainless tube (A114). Fascia mount spacer 51-WAS001/4.