

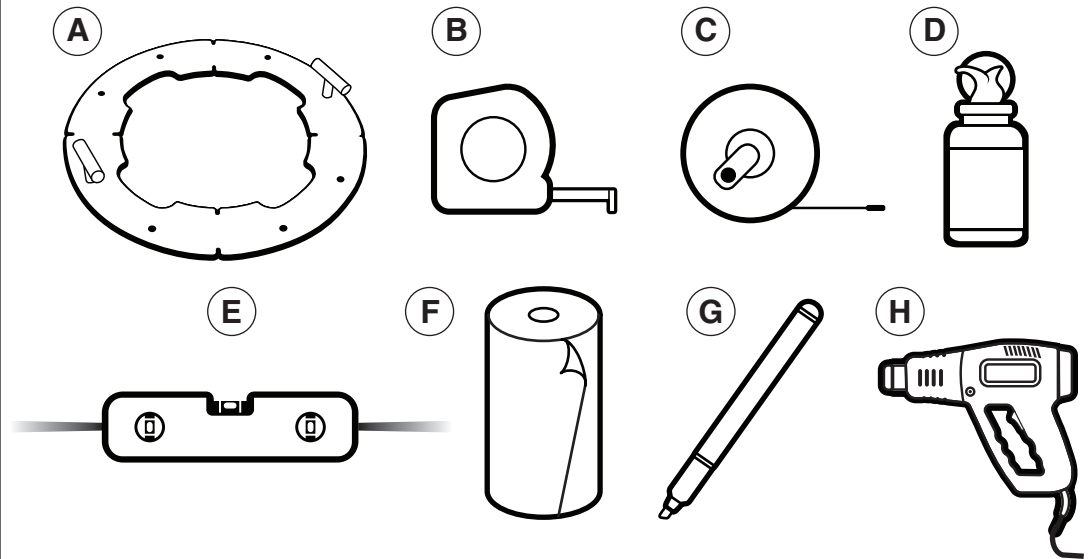
Magnetic Base Stanchions

for smooth, non-porous surfaces (such as terrazzo or marble)

You will need the following tools:

(Sold Separately)

- A. Floor Plate Template
- B. Tape Measure
- C. Chalk Snap Line
- D. Rubbing Alcohol Wipes
- E. Laser Layout Tool
- F. Lint-Free Towels
- G. Non-Permanent Marker
- H. Heat Gun

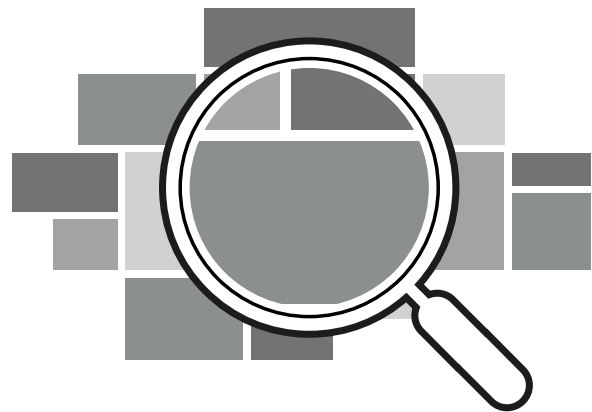


STEP

1

Assess Floor Condition

Assess the floor surface to make sure it is free from indents and abrasions wherever stanchions will be mounted. Floor surfaces must be flat, smooth, and even for the adhesive to work properly.



STEP

2

Prepare Floor Surface

Sweep the floor surface of all debris. Wash floor if needed. Do not use harsh chemicals. Allow surface to completely dry before proceeding.



STEP

3

Layout Queue

Determine the center-to-center distance between posts. Using a laser layout tool and tape measure, determine position of first row of stanchions. Mark this position onto the floor surface by snapping a chalk line. This will mark the center line of the posts for your first row.

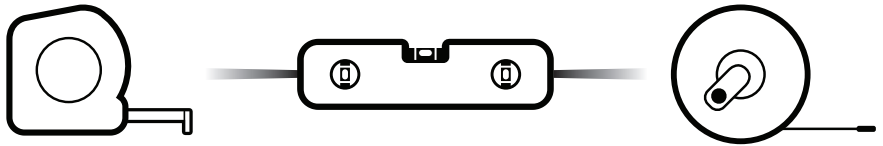
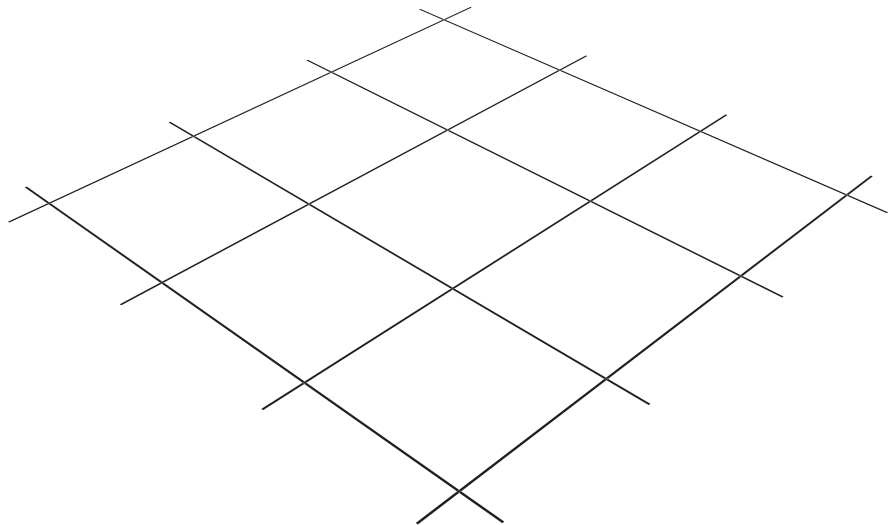
Repeat this process for all parallel rows.

We recommend blue chalk for white or light-colored floors, because it won't stain the surface. White chalk is good for dark-colored floors.

Now mark perpendicular stanchion rows using the method above.

When finished, stanchion centers are where parallel and perpendicular chalk lines cross.

NOTE: Please consult Lavi Industries for recommended distances between stanchions.



STEP

4

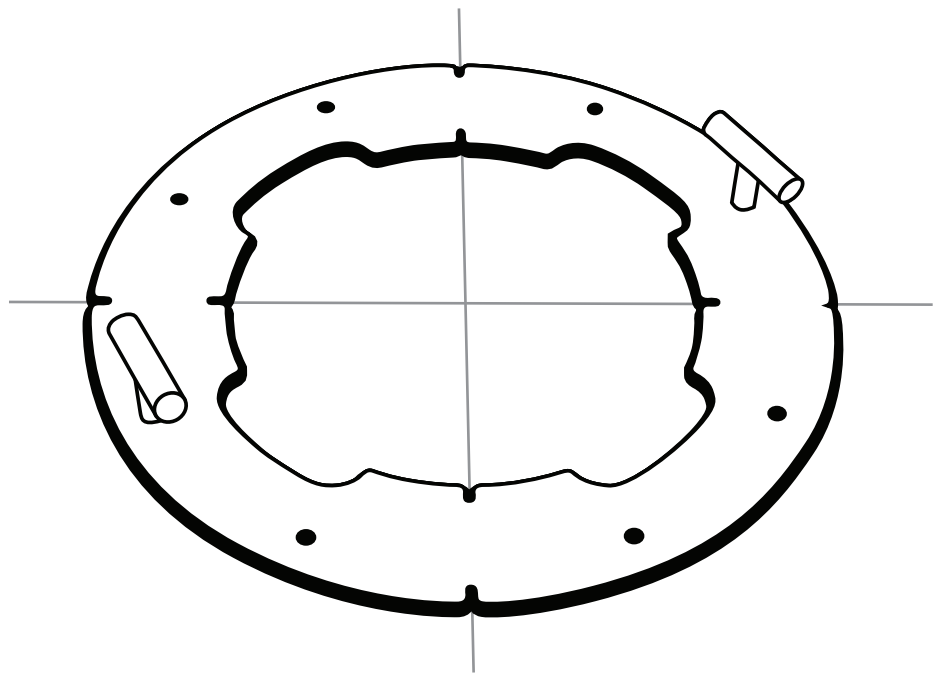
Position Floor Plate Template

Place template over center mark on floor surface, aligning 4 crosshair notches on inner/outer ring of template with the chalk lines on the floor.

Hold the template in place with one hand, then clean the floor surface in the exposed area of the template using the rubbing alcohol wipes.

If needed use multiple wipes until mounting surface is completely clean of chalk residue, dirt, oil, and grime.

Let surface dry before proceeding.



STEP

5

Affix Floor Plate onto Floor Surface

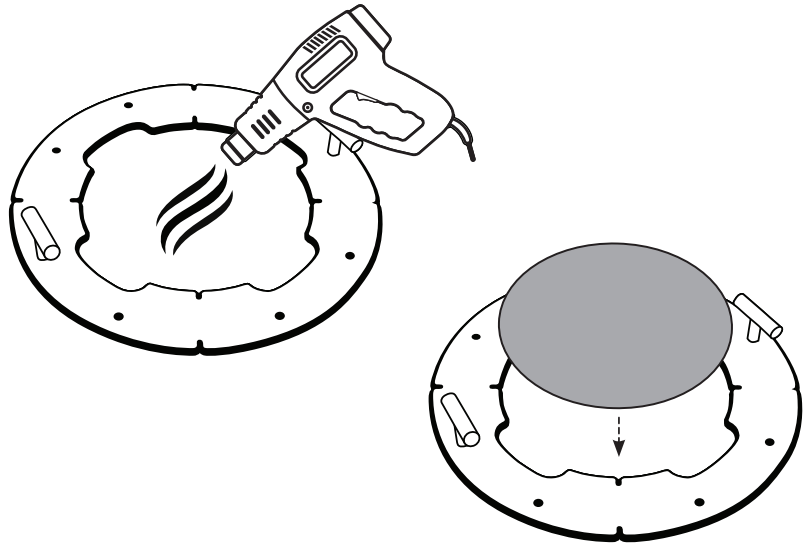
Using heat gun, heat the surface in the template area to around 100° F. Affix floor plate while surface is still warm.

Carefully remove backing from floor plate to expose adhesive.

NOTE: The 3M adhesive used on the floorplate is industrial strength. Once applied it cannot be repositioned.

Gently drop plate, adhesive side down, into opening of template. Press down firmly on plate to spread glue, then carefully remove template.

Repeat the above process for all plates.



STEP

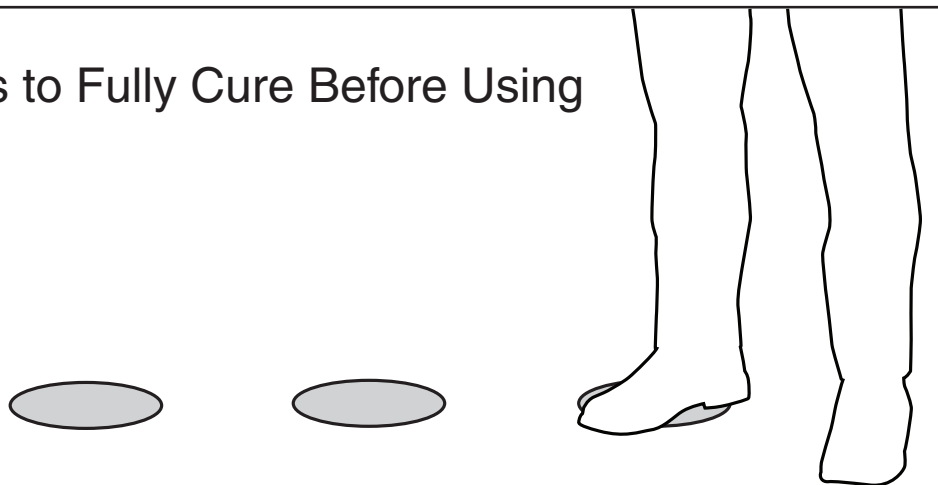
6

Allow Floor Plates to Fully Cure Before Using

Floor plate adhesive reaches maximum effectiveness when fully engaged with mounting surface.

To fully engage adhesive, step/tap on entire plate with full weight for 30 seconds to spread glue evenly across surface. For best results and longest life, adhesive should cure 24 - 72 hours before using floor plate.

Do not attach stanchions to floor plates for a minimum of 24 hours after installation.

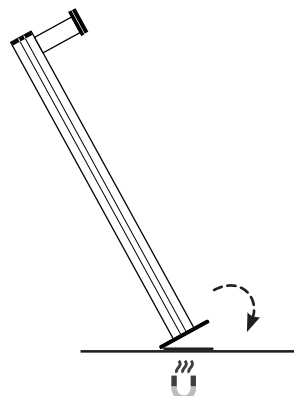


STEP

7

Attach Stanchions

After a minimum 24 hours of cure time, determine the belt orientation, align edge of base to floor plate, and rock post into place.



NOTE: Mild soap and water should be used. When cleaning floor around base plate, avoid using the following list of harsh and corrosive chemicals:

- 3M™ Citrus Base Cleaner
- MEK (Methyl-Ethyl-Ketone)
- Other commercial adhesive removers