

There's a *reason* why the world's leading companies choose Beltrac®.

Retractable Belt Barriers



Actually, there's many.

The world's leading companies rely on Beltrac® Retractable Belt Barriers to keep their employees and customers safe. And with good reason. Lavi Industries' industrial-strength Beltrac barrier systems have been guiding the public and keeping them safe for over 25 years.

What makes Beltrac better?



OTHER BRANDS

Flexible, Quality Mounting

More options with stronger connections than any other brand.



Smaller Footprint

Beltrac safety barriers take up less space than other brands, keeping them out of the way when not in use.



Quick and Easy Installation

Low profile, hidden mounts make installation a breeze, and create a fast way to relocate barriers when necessary.



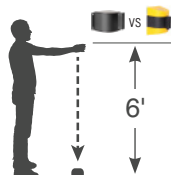
Sleek, Versatile Design

With more colors, more belt options, and a clean aesthetic, Beltrac will compliment any decor, and stand out when needed.



Superior Strength

Beltrac's industrial strength and quality build keeps them working long after other brands fail.



Watch the Video!



To order, or for more information, contact:

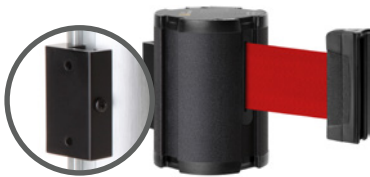
sales@lavi.com | 1.877.ASK.LAVI

© 2018 Lavi Industries
All Rights Reserved.

Beltrac® Retractable Belt Safety Barriers



Retractable Belt Barriers



7-foot and 13-foot Wall Mounts

Temporarily close or block access to aisles, doorways and thresholds.



7-foot and 13-foot Magnetic Mounts

Powerful magnets instantly adhere to most metal surfaces.



18-foot and 24-foot Wall Mounts

Temporarily restrict access to wide or large openings, corridors, and stairs.



18-foot Retractable Belt Warehouse FixedMount™

A wing bolt allows for a permanent attachment to warehouse uprights.



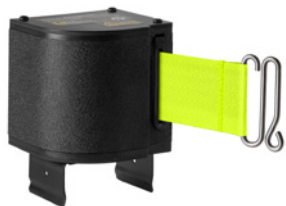
18-foot Retractable Belt Warehouse QuickMount™

Attaches to warehouse shelving uprights in seconds.



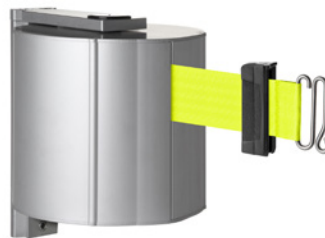
18-foot Dual-Belt Safety Barrier

Provide maximum visibility. Magnetic or standard mount.



18-foot Retractable Belt Warehouse Rack Mount

Simply snap onto a beam or truss to create an instant safety barrier.



65-foot Retractable Belt Wall Mount Safety Barrier

This swiveling wall mounted barrier extends to 65 feet.