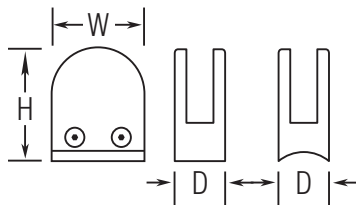


PART# 851R/424

Radius Glass Grip with Pin for 1.67" Diameter Tube



H	1.7"
W	1.7"
D	0.94"

MATERIAL & AVAILABLE FINISHES

	BRASS	304 SST	316 SST
Polished			✓
Satin			✓
Clear Coat			

MATERIAL USAGE

	BRASS	304 SST	316 SST
Indoor			✓
Outdoor			✓

MATERIAL CARE

Stainless Steel	Use metal cleaner and apply with a damp, soft cloth.
------------------------	--

INSTALLATION

Remove the side plate that is mounted with two screws and remove pin. Mount glass grip to tube using a M8 x 1.25 pitch screw, 20mm long. Replace pin, mount glass and then replace the side plate.

HARDWARE INCLUDED

USE TOGETHER WITH

1.67" OD tube (A114), Rubber insert set for 3/8" glass (85-GGI1010).