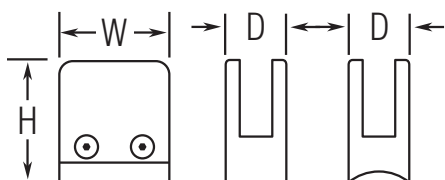


**PART# 850S/424**

**Square Glass Grip with Pin for 1.67" Diameter Tube**



<b>H</b>	1.7"
<b>W</b>	1.7"
<b>D</b>	0.94"

**MATERIAL & AVAILABLE FINISHES**

	BRASS	304 SST	316 SST
<b>Polished</b>			✓
<b>Satin</b>			✓
<b>Clear Coat</b>			

**MATERIAL USAGE**

	BRASS	304 SST	316 SST
<b>Indoor</b>			✓
<b>Outdoor</b>			✓

**MATERIAL CARE**

<b>Stainless Steel</b>	Use metal cleaner and apply with a damp, soft cloth.
------------------------	--

**INSTALLATION**

Remove the side plate that is mounted with two screws and remove pin. Mount glass grip to tube using a M8 x 1.25 pitch screw, 20mm long. Replace pin, , mount glass and then replace the side plate.

**HARDWARE INCLUDED**

---

**USE TOGETHER WITH**

1.67" OD tube (A114), Rubber insert set for 1/4" glass (85-GGI1003), Rubber insert set for 3/8" glass (85-GGI1004).