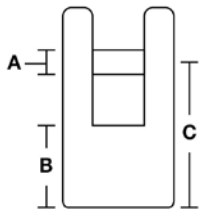
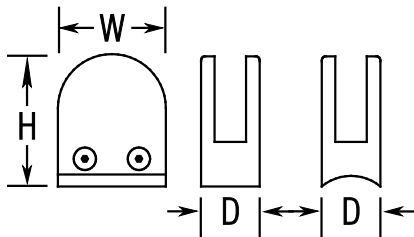


PART# 813R/F

Radius Glass Grip for 1/2" Thick Glass



H	2.31"	A	0.25"
W	2.13"	B	0.69"
D	1.44"	C	1.97"

MATERIAL & AVAILABLE FINISHES			
	BRASS	304 SST	316 SST
Polished		√	
Satin		√	
Clear Coat			

MATERIAL USAGE			
	BRASS	304 SST	316 SST
Indoor		√	
Outdoor			

MATERIAL CARE	
Stainless Steel	Use metal cleaner and apply with a damp, soft cloth.

INSTALLATION	Remove the side plate that is mounted with two screws and remove pin and gaskets. Mount glass grip to surface using a screw no larger than a 1/4-20. Replace gaskets and pin, mount glass and then replace the side plate.
HARDWARE INCLUDED	---
USE TOGETHER WITH	2" Sq tube or other suitable flat surfaces.