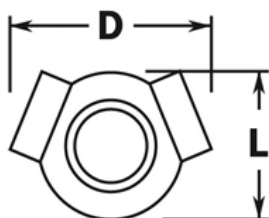


**PART# 709/1H**

**Ball 135 Degree Side Outlet Tee for 1-1/2" Dia. Tubing**



<b>D</b>	3-5/16"
<b>L</b>	2-1/2"

MATERIAL & AVAILABLE FINISHES			
	BRASS	304 SST	316 SST
<b>Polished</b>	√		
<b>Satin</b>	√		
<b>Clear Coat</b>	√		

MATERIAL USAGE			
	BRASS	304 SST	316 SST
<b>Indoor</b>	√		
<b>Outdoor</b>	√*		
*Uncoated brass only			

MATERIAL CARE	
<b>Brass</b>	Use Lavi Metal Polish (Item# 00202) and apply with a damp, soft cloth.

<b>INSTALLATION</b>	Insert tube in openings and fix the fitting to the tube using the self drilling screws.
<b>HARDWARE INCLUDED</b>	4 x #8 x 5/8" Philips pan head self drilling screws.
<b>USE TOGETHER WITH</b>	1.5" OD tube (A110) and other ball fittings (700 series).