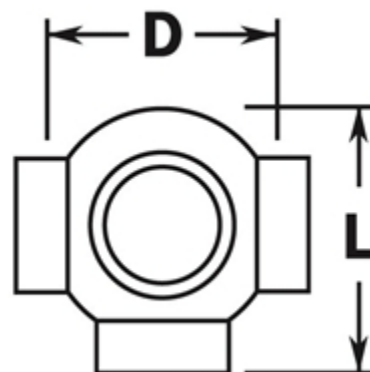
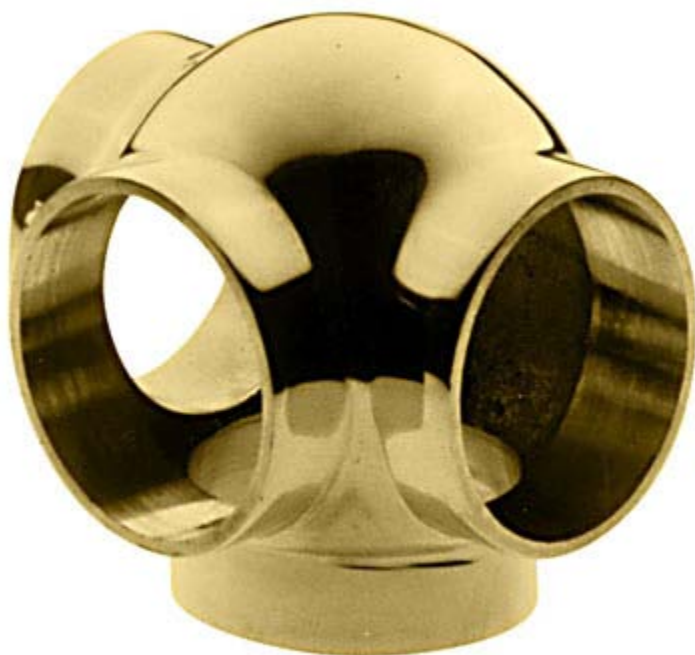


**PART# 705/1**

Ball Side Outlet Tee for 1" Diameter Tubing



<b>D</b>	2"
<b>L</b>	2-3/16"

<b>MATERIAL</b>	Brass.
<b>AVAILABLE FINISHES</b>	Polished, Satin, Clear Coat, Powder Coat.
<b>INSTALLATION</b>	Insert tube in openings and fix the fitting to the tube using the self drilling screws.
<b>HARDWARE INCLUDED</b>	4 x #8 x 5/8" Philips pan head self drilling screws.
<b>USE TOGETHER WITH</b>	1" OD tube (A100), and matching finials (600/1, 602/1).
<b>AVAILABILITY</b>	Stock item in Valencia, CA & Brewster NY.