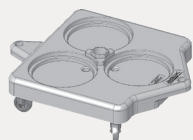
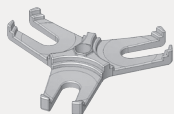


ShuttleTrac™ 9-Trac

Parts List:



(1) Shuttle Trac Base



(2) Support Brackets



(3) 1/4-20x5/8" Hex Bolts
Stainless Steel

(1) Pull Handle



(3) 1/4" Lock Washers



(3) 1/4" Flat Washers



(1) Handle Notched Washer



(1) Center Support Post



(1) Bracket Support Pin



(1) Hexagon End Cap



(1) Handle Locking Pin

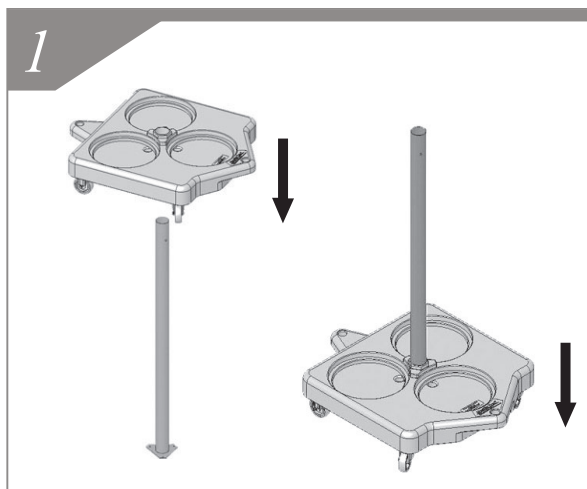
Required Tools



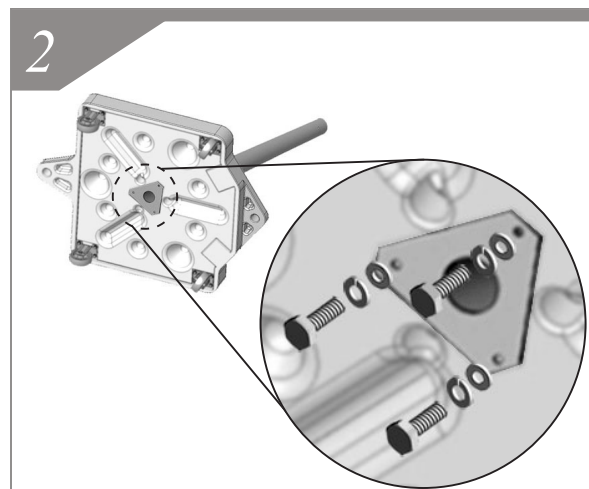
Adjustable Wrench



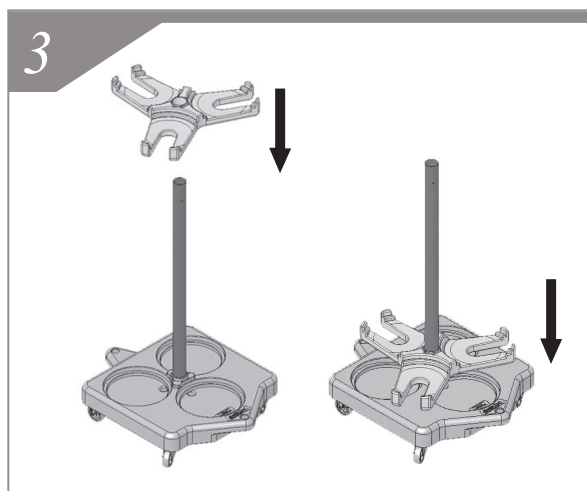
Goggles



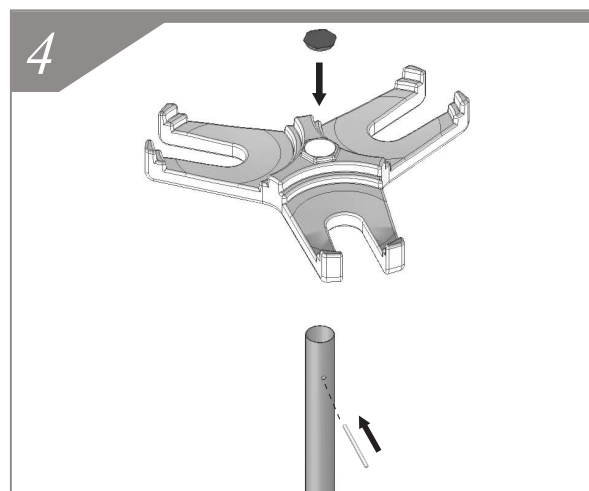
1. Hold center support post vertical. Slide Base down until the casters rest on the floor.



2. Lay the base on its side. Push the flange on the Center Support Post toward the base making sure it will line up with the depression. Install three 1/4-20 Hex Bolts and both Lock and Flat washers with a 7/16" wrench or socket.

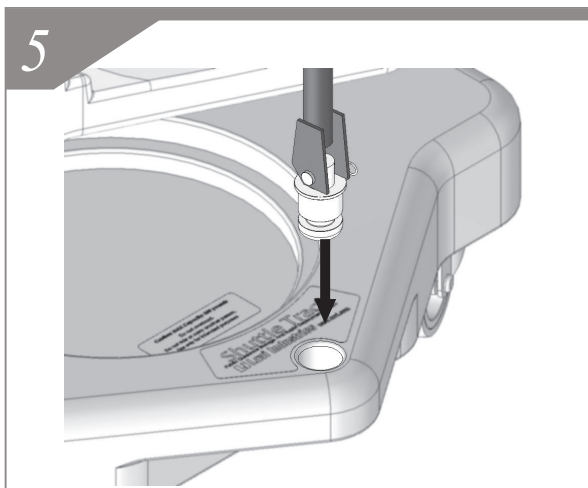


3. With the Base upright and on the casters, slide first yellow Support Bracket over the Center Post until it rests on the Base. Rotate the bracket until it engages the raised hexagon on the base.

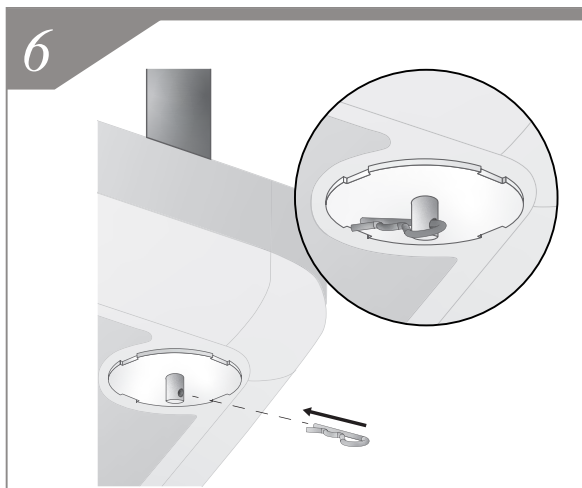


4. Install Bracket Support Pin through hole in Center Post. It should be centered. Slide second Support Bracket over Center Post allowing it to come to rest on the Pin. Rotate bracket to allow the pin to engage recess on bottom of bracket. Install Hexagonal End Cap in center hole of Bracket.

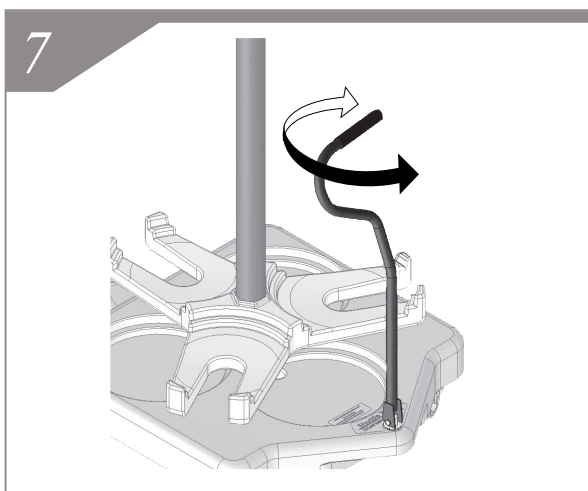
ShuttleTrac™ 9-Trac



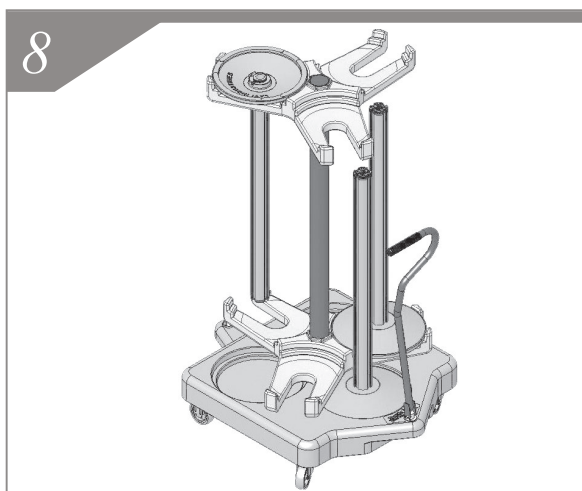
5. Install Pull Handle into the hole in base adjacent to yellow label.



6. From underneath the base, place Handle Notched Washer on the end of the Pull Handle and then push Handle Locking Pin through the hole below the washer to secure the Pull Handle in place.



7. With handle upright and engaged. Rotate it 180 degrees. The handle should be able to be pulled forward to move the cart. If this doesn't occur, rotate handle 180 degrees. When the handle is pushed back, it should come to a stop or rest position.



8. Illustrates correct placement of stanchions on the cart ready to be deployed.