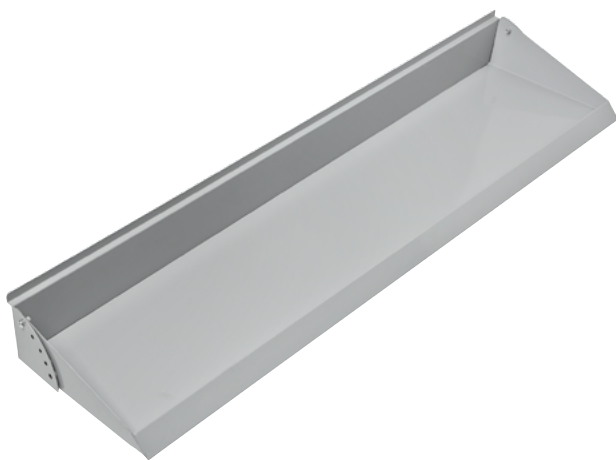


NeXtrac® Merchandising

Adjustable Angled Shelf

Adjustability means versatility in this unique slatwall shelving solution!



Features & Benefits:

- 5-position tilt provides the perfect angle for your merchandise.
- Deep, 1" lip ensures that product will not slide off shelf.
- Gray finish coordinates well with all merchandising systems.
- Up to 100 lbs. load capacity.
- Ships assembled. Easy to install and adjust.
- 48" long x 10" deep.