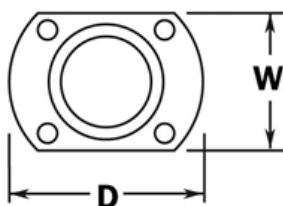


PART# 511/1H

Cut Wall Flange for 1-1/2" Diameter Tubing



W	2"
D	3"

MATERIAL & AVAILABLE FINISHES

	BRASS	304 SST	316 SST
Polished	√	√	
Satin	√	√	
Clear Coat	√		

MATERIAL USAGE

	BRASS	304 SST	316 SST
Indoor	√	√	
Outdoor	√*		
*Uncoated brass only			

MATERIAL CARE

Brass	Use Lavi Metal Polish (Item# 00202) and apply with a damp, soft cloth.
Stainless Steel	Use metal cleaner and apply with a damp, soft cloth.

INSTALLATION

Mount plate to the horizontal surface or wall. Mount matching diameter tube inside the neck of the flange. Fix the tube to the neck using the supplied self-drilling screw.

HARDWARE INCLUDED

4 x #10 x 1-1/2" Philips flat head screw. 1 x #8 philips pan head self drilling screw.

USE TOGETHER WITH

1.5" OD tube (A110), matching flush fittings for 1.5" tube (730/1H series) and matching finials (600/1H, 602/1H, 608/1H). Can also be used with tube and ball fittings.