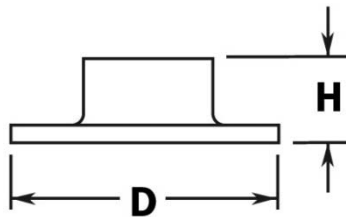


**PART# 510/1H**

**3" Wall Flange for 1-1/2" Diameter Tubing**



CP	1-1/16"
D	3"

**MATERIAL & AVAILABLE FINISHES**

	BRASS	304 SST	316 SST
Polished	√	√	
Satin	√	√	
Clear Coat	√		

**MATERIAL USAGE**

	BRASS	304 SST	316 SST
Indoor	√	√	
Outdoor	√*		

\*Uncoated brass only

**MATERIAL CARE**

<b>Brass</b>	Use Lavi Metal Polish (Item# 00202) and apply with a damp, soft cloth.
<b>Stainless Steel</b>	Use metal cleaner and apply with a damp, soft cloth.

**INSTALLATION**

Mount plate to the horizontal surface or wall and matching diameter tube inside the neck. Fix the tube to the neck using the supplied PPH screw.

**HARDWARE INCLUDED**

3 x #10 x 1-1/2" PFH screws. 1 x #8 x 5/8" PPH self drilling screw.

**USE TOGETHER WITH**

1.5" OD tube (A110), matching flush fittings for 1.5" tube (730/1H series) and matching finials (600/1H, 602/1H, 608/1H). Can also be used with tube and ball fittings.