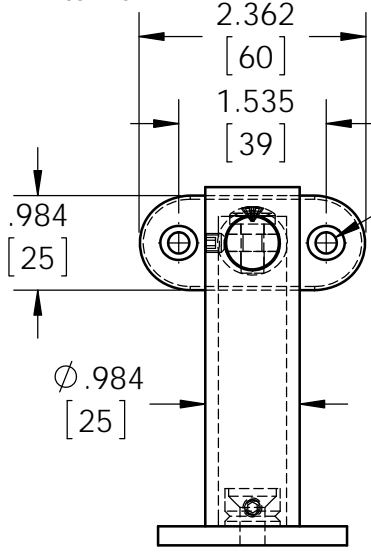


1.000
[25.40]

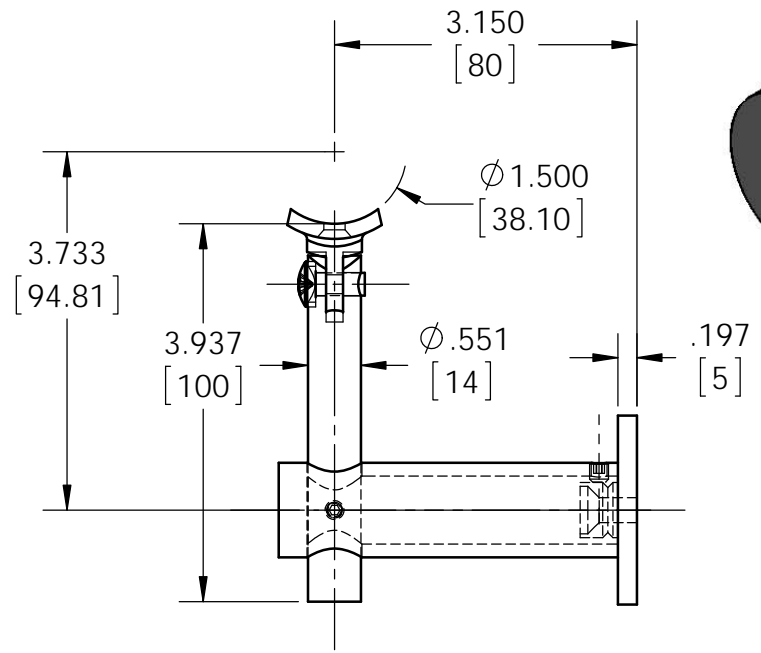
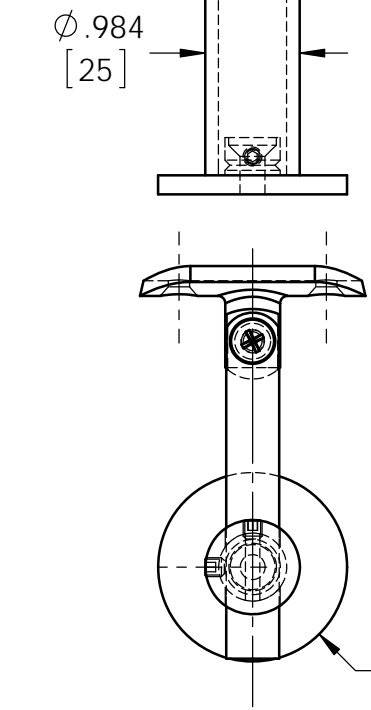
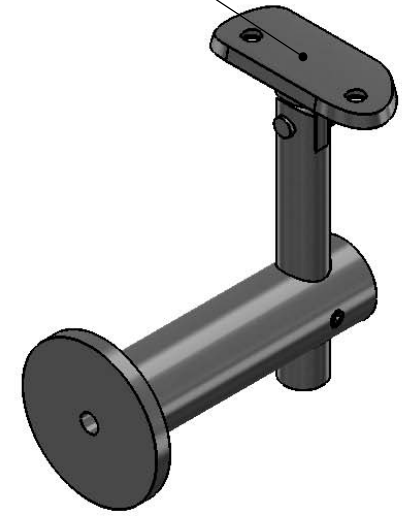
THE INFORMATION CONTAINED IN THIS DRAWING IS THE SOLE PROPERTY OF LAVI INDUSTRIES. ANY REPRODUCTION IN WHOLE OR PART WITHOUT WRITTEN PERMISSION OF LAVI INDUSTRIES IS PROHIBITED.
2012 (c) LAVI INDUSTRIES

REVISIONS		
REV.	DESCRIPTION	DATE
D01		7/21/2016



2X Ø .221 [5.61] THRU ALL
✓ Ø .385 [9.78] X 82°

CAST LETTERING
"LAVI INDUSTRIES"



UNLESS OTHERWISE SPECIFIED (INCHES)
FRACS. ±1/32" ANG. ±1°
.XX ±.03 .XXX ±.015
 ISO 286-2 1988, MACHINING JS 13
 FABRICATION JS 16

FINISH NOTES:
 FOR POLISH: #8 FINISH (EQUIVALENT TO 320 GRIT)
 FOR 304 SATIN: #4 FINISH (EQUIVALENT TO 180 GRIT)
 FOR 316 SATIN: #6 FINISH (EQUIVALENT TO 240 GRIT)
 COMMENTS:

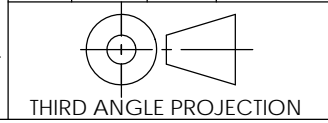
REVISION: D01
 DO NOT SCALE DRAWING

LAVI INDUSTRIES

NAME	DATE	SIGNATURE
DRAWN waltons	7/21/2016	
CHK'D		

LAVI INDUSTRIES
 27810 AVENUE HOPKINS
 VALENCIA, CA. 91355
 Toll Free: (800) 624 6225
 Eng Dept: (661) 219 3141

TITLE/DESCRIPTION:
 Handrail Bkt, 1.5", Adjustable



MATERIAL:
 AISI 316 STAINLESS STEEL

DWG NO.
49-309-1H

Primary dimensions are in INCHES
 Secondary dims (if present) are in mm

- NOTES
1. FINISHED ITEM TO BE FREE FROM FLASH, DISTORTION, SINK MARKS OR SHARP EDGES.
 2. THIS DRG. TO BE READ INCONJUNCTION WITH 3D CAD DATA FILE.
 3. TOOL GATES AND EJECTION POINTS TO BE AGREED WITH DESIGNER PRIOR TO TOOLING.
 4. PLEASE SEE PO FOR APPROPRIATE FINISH (REQUEST FINISH LEDGER IF NOT INCLUDED)
 5. HARDWARE: 316SS, 10-24 x 1/2" PHILLIPS FLAT HEAD MACHINE SCREW (2 REQ)