

# Mounting Solutions

*Solid Brass and Stainless Steel Components*



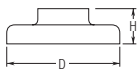
*Mounting solutions to solve the most common installation problems.*

# Mounting Solutions

Solid Brass and Stainless Steel Components

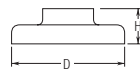
**Standard Finishes & Materials:** Polished Brass, Chrome, Polished Stainless Steel, & Satin Stainless Steel.  
In addition to our standard finishes, Brass Clear Coat & Lido Tone finishes may be available. Please call for details.

	BRASS
	BRASS & CHROME
	STAINLESS STEEL
	BRASS & STAINLESS STEEL



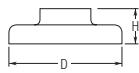
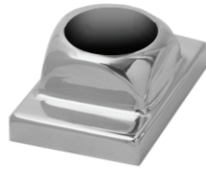
**540**  
Flange Canopy

Item#	Tubing	D	H
● 540/1H	1 1/2"	4"	1 1/2"
● 540/2	2"	5"	1 1/2"
● 540/3	3"	7"	1 1/2"



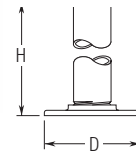
**540B**  
Sloped Flange Cover

Item#	Tubing	D	H
● 540B/1H	1 1/2"	4"	1 1/16"



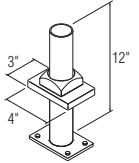
**540C**  
Cut Flange Canopy

Item#	Tubing	D	H
● 540C/1H	1 1/2"	4 1/2"	1 3/4"
● 540C/2	2"	4 1/2"	1 3/4"



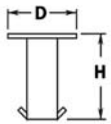
**20-541**  
Steel Flange w/ Steel Insert

Item#	Tubing	D	H
20-541/1H	1 1/2"	3 1/2"	12"
20-541/2	2"	4 1/2"	12"



**542/SET & 543/SET**  
Mounting Flange & Canopy

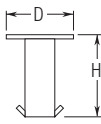
Item#	Tubing
● LR-02-542/SET	2"
● LR-02-543/SET	1 1/2"



**544**  
Floor Socket and Cap

Item#	Tubing	D	H
● 544/2	2"	2 7/8"	4 3/4"
● 544/2CAP	2"	2 1/8"	7/8"

Note: 544/2 includes both Socket and Cap, 544/2CAP is a Replacement Cap only.



**545**  
Floor Socket and Cap

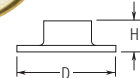
Item#	Tubing	D	H
● 545/2	2"	4 7/8"	4 1/2"
● 545/2CAP	2"	2 1/8"	3/4"

Note: 545/2 includes both Socket and Cap, 545/2CAP is a Replacement Cap only.



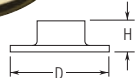
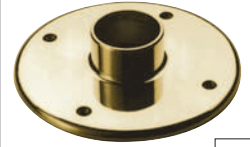
**512**  
4" Floor Flange

Item#	Tubing	D	H
● 512/1H	1 1/2"	4"	1 1/4"



**532**  
5" Floor Flange

Item#	Tubing	D	H
● 532/2	2"	5"	1 3/8"



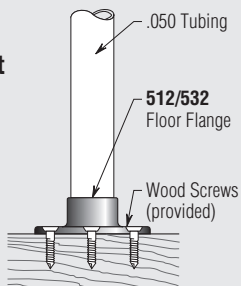
**552/560**  
7" Floor Flange

Item#	Tubing	D	H
● 552/2H	2 1/2"	7"	1 1/2"
● 560/3	3"	7"	1 1/2"

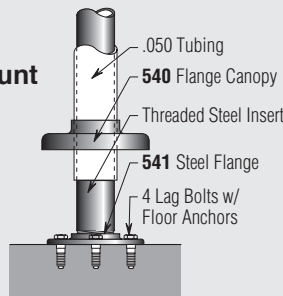
## Mounting Solutions

Please check our current price list for ongoing information updates.

### Type A Surface Mount



### Type B Surface Mount



### Type C Core Drilled

