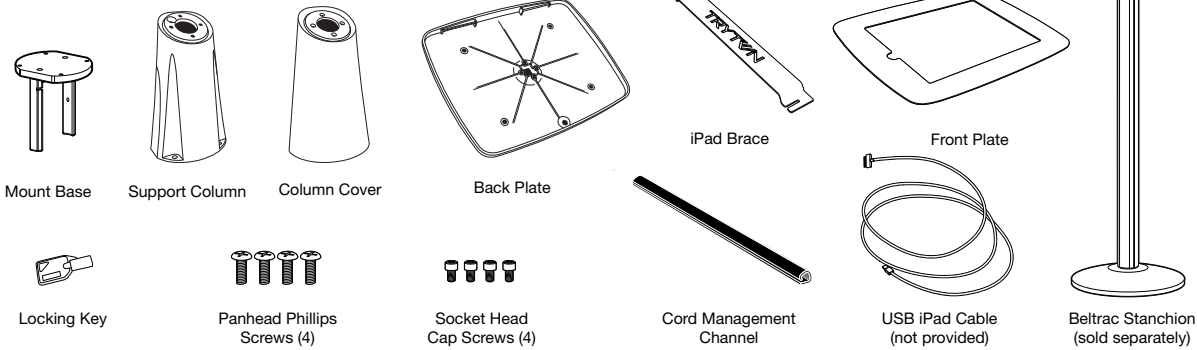
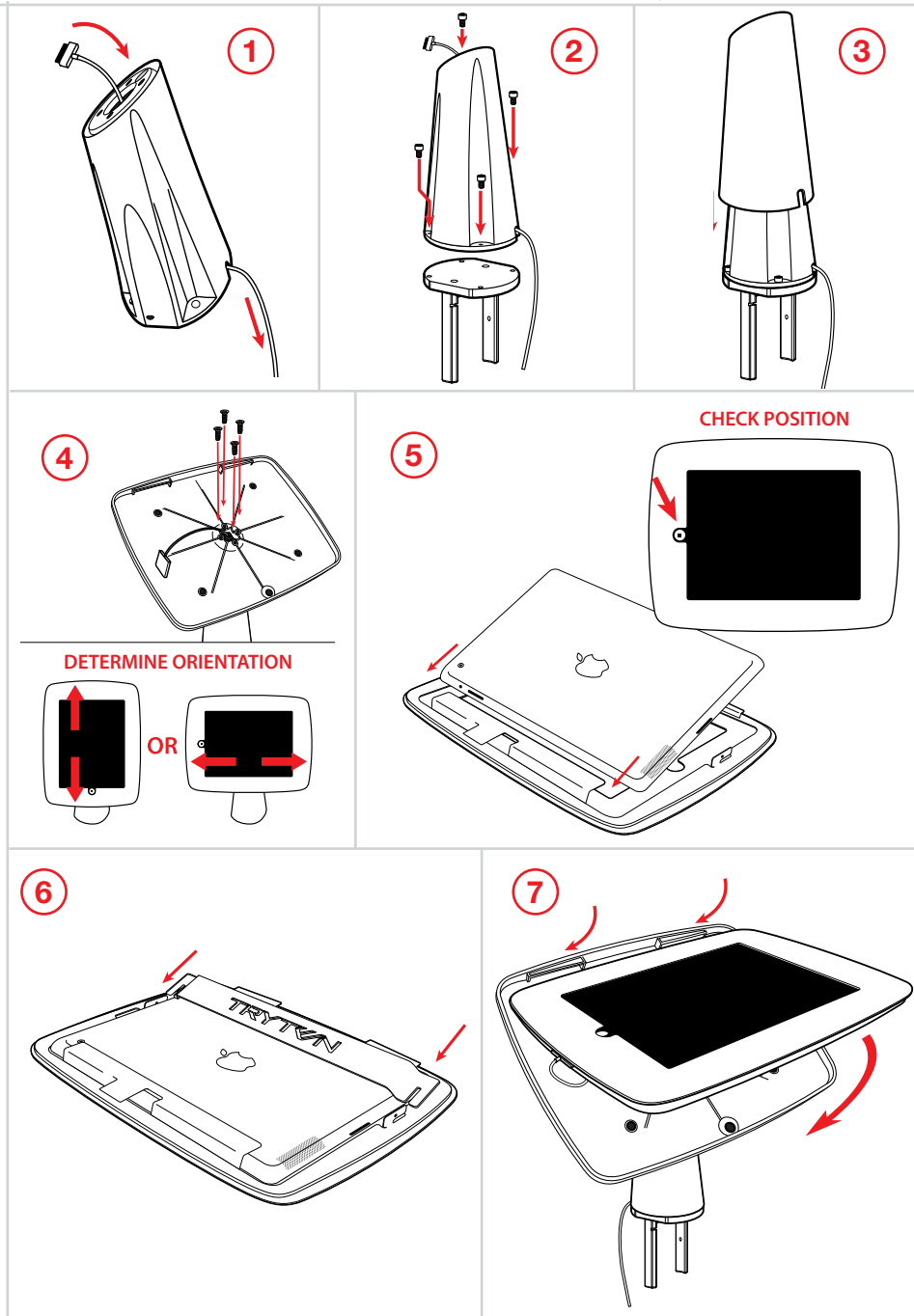


# iPad® Mount Assembly Instructions

## PARTS REFERENCED ON THIS SHEET

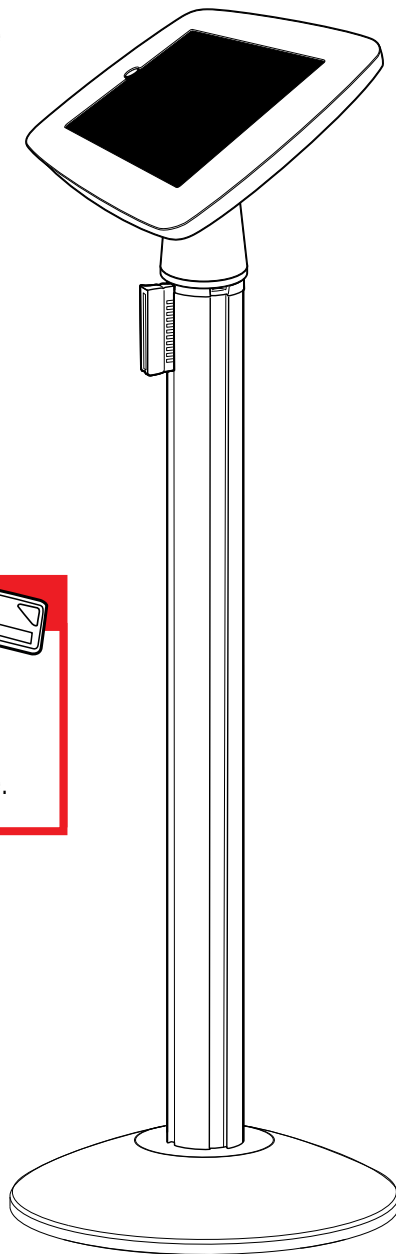


1. Thread the USB iPad Cable through the Support Column as shown.
2. Attach the Support Column to the Mount Base using four (4) Socket Head Cap Screws. Ensure that USB iPad Cable passes through notch in Support Column. Tighten Cap Screws with Allen Wrench.
3. Slide Column Cover over Support Column.
4. Thread USB iPad Cable from top of Support Column through hole in Back Plate. Rotate Back Plate so that Locking Mechanism is on the bottom for horizontal orientation or on the left for a vertical orientation. Secure Back Plate to Support Column using four (4) Panhead Phillips Screws.
5. Slide iPad into place on Front Plate assuring that Home Button on screen shows through cutout in Front Plate.
6. Secure iPad to Front Plate by sliding iPad Brace into brackets on the Front Plate.
7. Plug the USB iPad Cable coming out of the Back Plate into the secured iPad. Attach Front Plate to Back Plate by slightly angling Front Plate so that the brackets on the inside top of Front Plate align with the notches on the inside top of Back Plate. Slide into place.



# iPad® Mount Assembly Instructions

8. Secure Front Plate and Back Plate by using the Locking Key to lock the pieces together.
9. Place the assembled iPad Mount unit on a Beltrac Post by sliding the prongs into the top grooves of the stanchion.
10. Secure by tightening the set screw on the side of the prong using the provided Allen Wrench.
11. Peel paper backing off the Cord Management Channel and align with post's dovetail groove where the USB iPad Cable exits the assembled iPad Mount unit. Position and press into place along the full length of the post's dovetail groove.
12. Starting at the top, press the extra USB iPad Cable into the open side of the Cord Management Channel, systematically working the cord into the conduit along the length of the channel. This will both contain and conceal the cord.



## SPECIAL NOTE



The key that you receive with this iPad Mount is specific to this unit and this unit only. Keys are not interchangeable.

