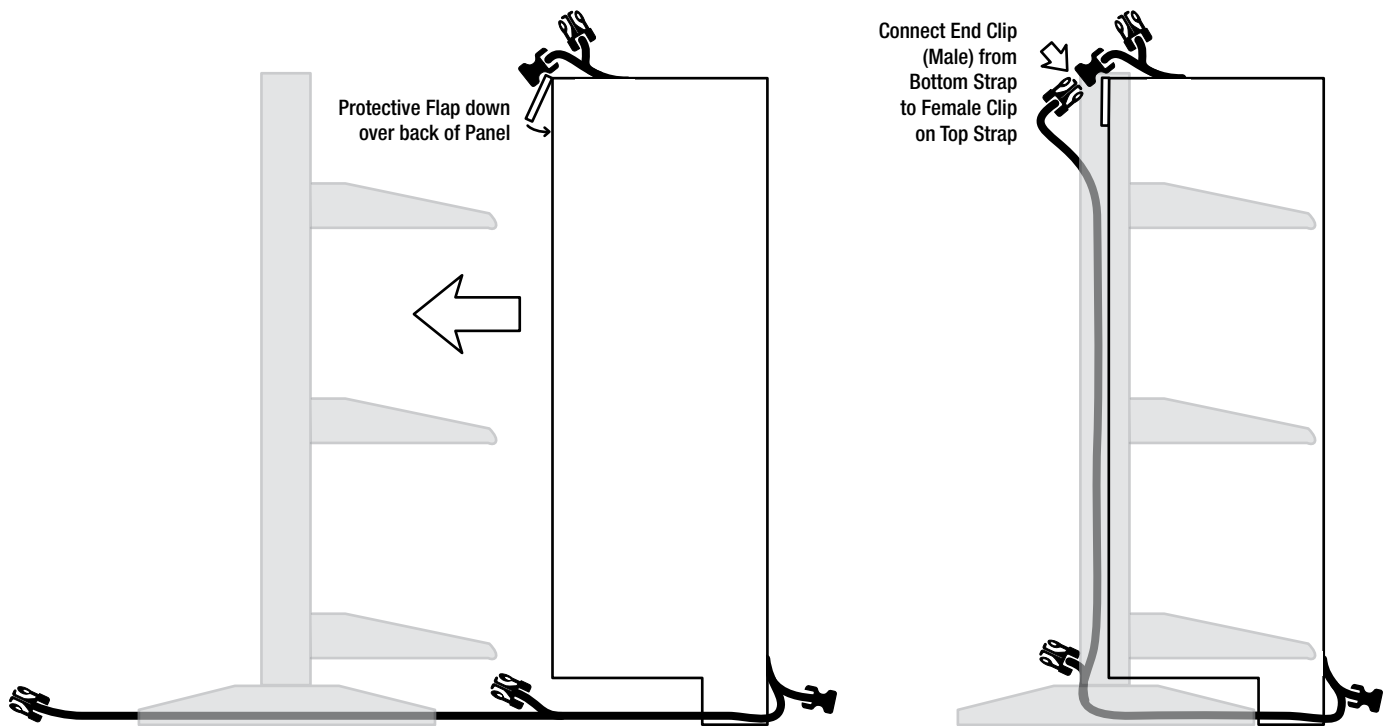
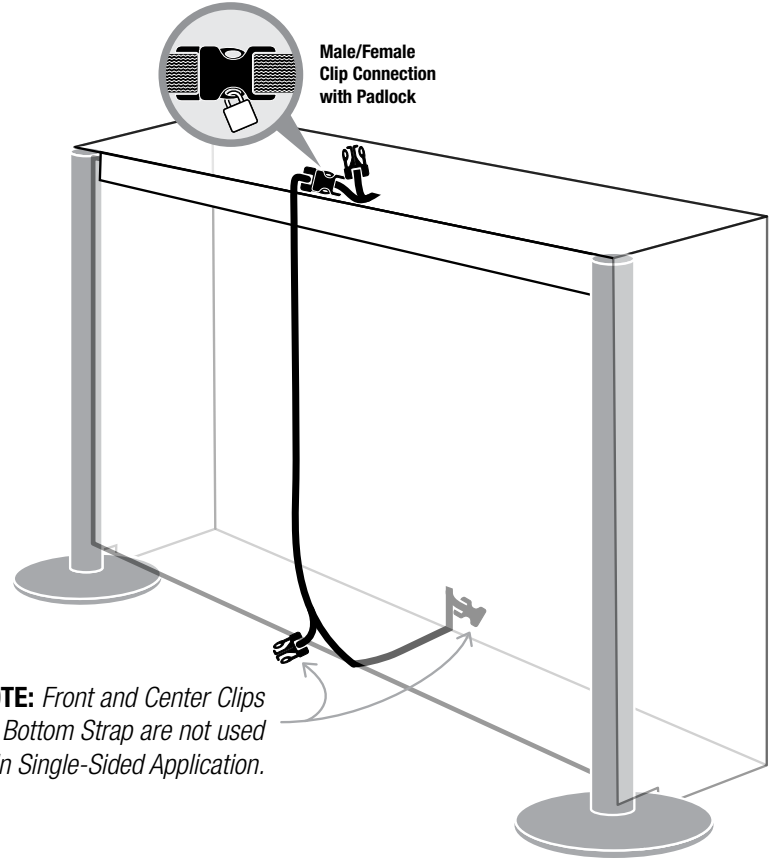


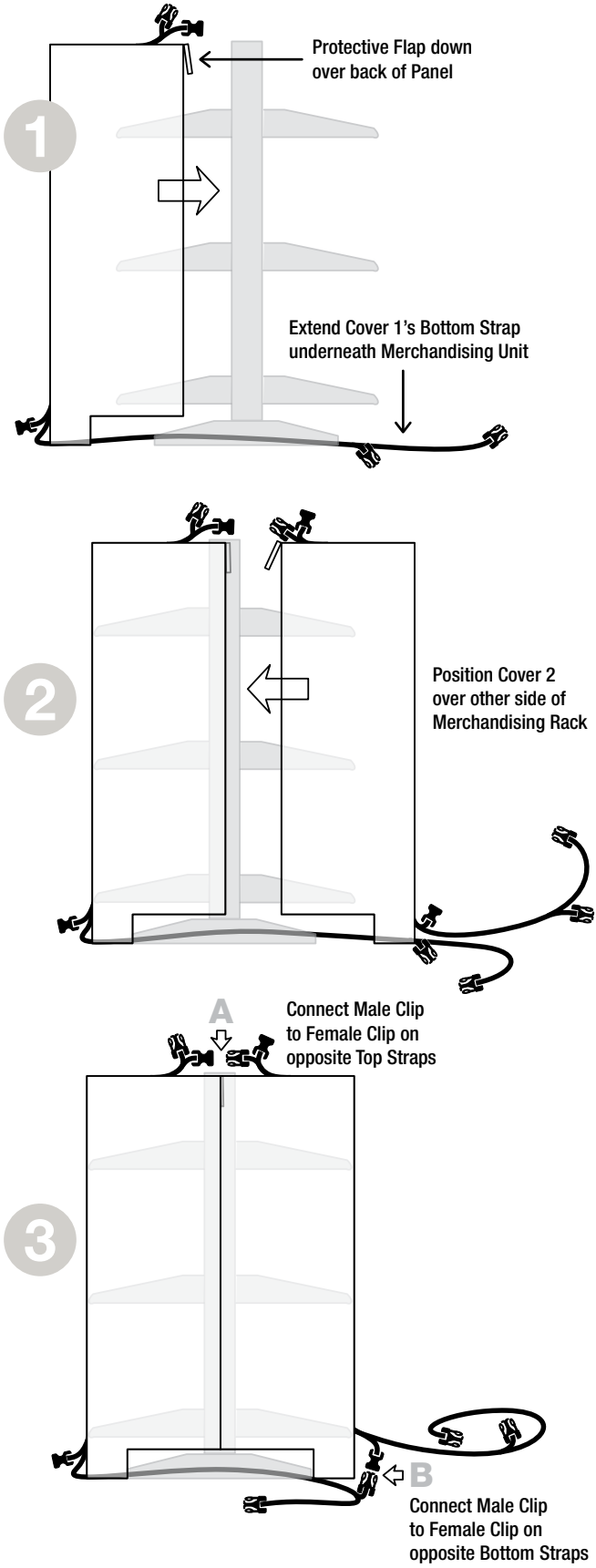
Locking Cover for NeXtrac®

Assembly Instructions for Single-sided Application:

1. Unfold Cover and place up to Merchandising Rack.
2. Pass Strap underneath Panel, then fit Cover over merchandise.
3. Connect End Clip to female Clip at the top and secure as shown with the provided Padlock.



Locking Cover for NeXtrac[®]



Assembly Instructions for Double-sided Application:

1. Unfold one Cover and position up to merchandising rack. Pass strap under panel and extend out along floor.
2. From the other side – Unfold second cover and position up to merchandising rack on top of opposing strap.
3. **Connect Clips:**
A: Connect 1 Female Clip to 1 Male Clip at top of Covers.
B: Connect the mid-strap Male Clip from Cover 1 to the Female Clip at the bottom of Cover 2.
4. Pass Padlocks through the loops in the Clip prongs, top and bottom, then secure.
5. Tuck excess Straps and unused Clips underneath Unit to hide.

