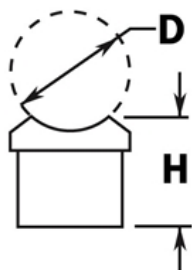


PART# 818/1H

Perpendicular Collar for 1-1/2" Diameter Tubing



D	1-1/2"
H	1-15/16"

MATERIAL & AVAILABLE FINISHES

	BRASS	304 SST	316 SST
Polished	√	√	
Satin	√	√	
Clear Coat	√		

MATERIAL USAGE

	BRASS	304 SST	316 SST
Indoor	√	√	
Outdoor	√*		

*Uncoated brass only

MATERIAL CARE

Brass	Use Lavi Metal Polish (Item# 00202) and apply with a damp, soft cloth.
Stainless Steel	Use metal cleaner and apply with a damp, soft cloth.

INSTALLATION

Connect collar to tube with threaded insert and screw or by plug-welding through center hole. Adhere other side of fitting to tube using Loctite 326 Metal Adhesive (#00201) and Primer (#00211).

HARDWARE INCLUDED

USE TOGETHER WITH

1.5" OD tube (A110), matching flush fittings for 1.5" tube (730 series) and matching finials (600/1H, 602/1H, 608/1H).