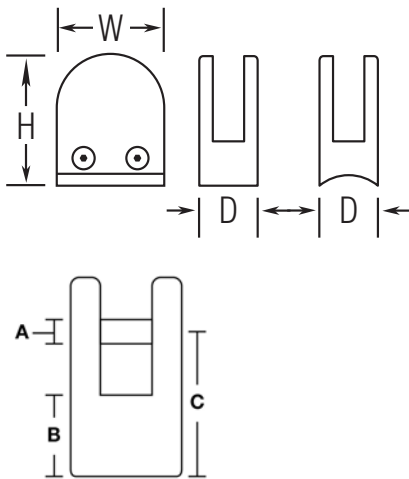


PART# 816F

Radius Glass Grip, Flat Back for 1/4" and 3/8" Thick Glass



H	2.125"	A	0.3125"
W	2.187"	B	0.67"
D	1"	C	1.75"

MATERIAL & AVAILABLE FINISHES

	PVD COAT BRASS	304 SST	316 SST
Polished	√	√	
Satin		√	
Clear Coat			

MATERIAL USAGE

	PVD COAT BRASS	304 SST	316 SST
Indoor	√	√	
Outdoor			

MATERIAL CARE

Stainless Steel	Use metal cleaner and apply with a damp, soft cloth.
------------------------	--

INSTALLATION

Remove the side plate that is mounted with two screws and remove plastic pin and gaskets. Mount glass grip to surface using a screw no larger than a 10-24. Replace gaskets and pin, mount glass and then replace the side plate.

HARDWARE INCLUDED

USE TOGETHER WITH

Square tube (C1212, C1616) or other suitable flat surfaces.