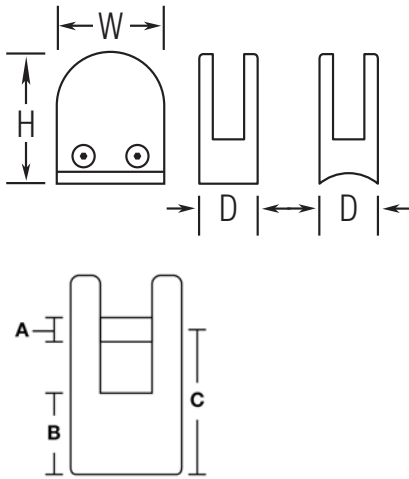


**PART# 816/2**

**Radius Glass Grip for 1/4" and 3/8" Thick Glass**



<b>H</b>	2.375"	<b>A</b>	0.3125"
<b>W</b>	1.7"	<b>B</b>	0.90"
<b>D</b>	1.1"	<b>C</b>	1.95"

**MATERIAL & AVAILABLE FINISHES**

	PVD COAT BRASS	304 SST	316 SST
<b>Polished</b>	√	√	
<b>Satin</b>		√	
<b>Clear Coat</b>			

**MATERIAL USAGE**

	PVD COAT BRASS	304 SST	316 SST
<b>Indoor</b>	√	√	
<b>Outdoor</b>			

**MATERIAL CARE**

<b>Stainless Steel</b>	Use metal cleaner and apply with a damp, soft cloth.
------------------------	--

**INSTALLATION**

Remove the side plate that is mounted with two screws and remove plastic pin and gaskets. Mount glass grip to surface using a screw no larger than a 10-24. Replace gaskets and pin, mount glass and then replace the side plate.

**HARDWARE INCLUDED**

---

**USE TOGETHER WITH**

2" outside diameter tube (A120 or A111).