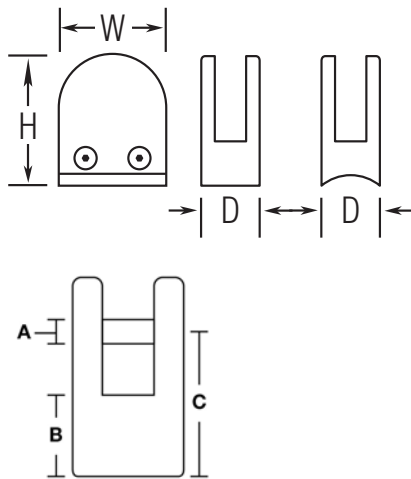


PART# 816/1H

Radius Glass Grip for 1/4" and 3/8" Thick Glass



H	2.375"	A	0.3125"
W	2.187"	B	0.90"
D	1.1"	C	1.95"

MATERIAL & AVAILABLE FINISHES			
	BRASS	304 SST	316 SST
Polished		√	
Satin		√	
Clear Coat			

MATERIAL USAGE			
	BRASS	304 SST	316 SST
Indoor		√	
Outdoor			

MATERIAL CARE	
Stainless Steel	Use metal cleaner and apply with a damp, soft cloth.

INSTALLATION	Remove the side plate that is mounted with two screws and remove plastic pin and gaskets. Mount glass grip to surface using a screw no larger than a 10-24. Replace gaskets and pin, mount glass and then replace the side plate.
HARDWARE INCLUDED	---
USE TOGETHER WITH	1.5" outside diameter tube (A110 or A111).