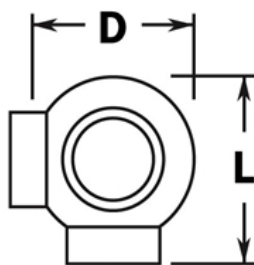


PART# 703/1H

Ball Side Outlet Elbow for 1-1/2" Tubing



D	2-1/2"
L	2-11/16"

MATERIAL & AVAILABLE FINISHES

	BRASS	304 SST	316 SST
Polished	√	√	
Satin	√	√	
Clear Coat	√		

MATERIAL USAGE

	BRASS	304 SST	316 SST
Indoor	√	√	
Outdoor	√*		

*Uncoated brass only

MATERIAL CARE

Brass	Use Lavi Metal Polish (Item# 00202) and apply with a damp, soft cloth.
Stainless Steel	Use metal cleaner and apply with a damp, soft cloth.

INSTALLATION

Insert tube in openings and fix the fitting to the tube using the self drilling screws.

HARDWARE INCLUDED

4 x #8 x 5/8" Philips pan head self drilling screws.

USE TOGETHER WITH

1.5" OD tube (A110).