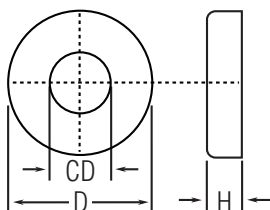
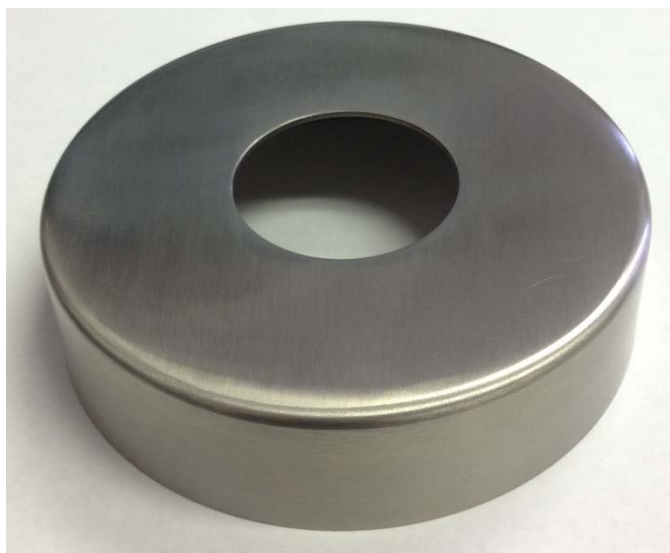


PART# 540/424

Flange Canopy, 1.67"



CD	1.69"
D	4.13"
H	1"

MATERIAL & AVAILABLE FINISHES

	BRASS	304 SST	316 SST
Polished		√	√
Satin		√	√

MATERIAL USAGE

	BRASS	304 SST	316 SST
Indoor			√
Outdoor			√

MATERIAL CARE

Stainless Steel	Use metal cleaner and apply with a damp, soft cloth.
------------------------	--

INSTALLATION

Place canopy over floor mount flange and secure in place with silicone.

HARDWARE INCLUDED

USE TOGETHER WITH

Flange (49-541/424), 1.67" OD tube (A114).