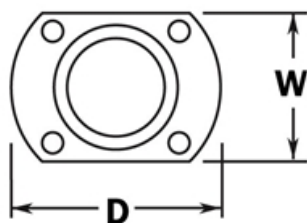


**PART# 531/2**

**Cut Wall Flange for 2" Diameter Tubing**



<b>W</b>	2-1/2"
<b>D</b>	4"

**MATERIAL & AVAILABLE FINISHES**

	<b>BRASS</b>	<b>304 SST</b>	<b>316 SST</b>
<b>Polished</b>	√	√	
<b>Satin</b>	√	√	
<b>Clear Coat</b>	√		

**MATERIAL USAGE**

	<b>BRASS</b>	<b>304 SST</b>	<b>316 SST</b>
<b>Indoor</b>	√	√	
<b>Outdoor</b>	√*		

\*Uncoated brass only

**MATERIAL CARE**

<b>Brass</b>	Use Lavi Metal Polish (Item# 00202) and apply with a damp, soft cloth.
<b>Stainless Steel</b>	Use metal cleaner and apply with a damp, soft cloth.

**INSTALLATION**

Mount plate to the horizontal surface or wall. Mount matching diameter tube inside the neck of the flange. Fix the tube to the neck using the supplied self-drilling screw.

**HARDWARE INCLUDED**

4 x #12 x 2" Philips flat head screws. 1 x #8 x 5/8" Philips pan head self drilling screw.

**USE TOGETHER WITH**

2" OD tube (A120), matching flush fittings for 2" tube (730/2 series) and matching finials (600/2, 602/2). Can also use with tube and ball fittings.