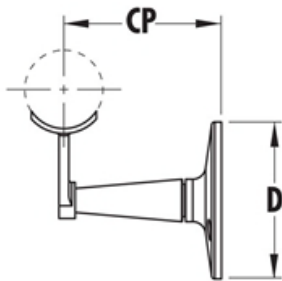


PART# 308U/2

Undrilled Handrail Bracket for 2" Diameter Tubing



CP	3-1/16"
D	3"

MATERIAL & AVAILABLE FINISHES			
	BRASS	304 SST	316 SST
Polished			
Satin			√
Clear Coat			

MATERIAL USAGE			
	BRASS	304 SST	316 SST
Indoor			√
Outdoor			√

*Uncoated brass only

MATERIAL CARE	
Stainless Steel	Use metal cleaner and apply with a damp, soft cloth.

INSTALLATION	Mount plate to the wall and matching diameter tube to the saddle. Thread on back of stem is 5/16"-18 x 1" deep.
HARDWARE INCLUDED	2 x #8 x 5/8" Philips flat head self drilling screws.
USE TOGETHER WITH	2" OD tube (A120), matching flush fittings for 2" tube (730/2 series) and matching finials (600/2, 602/2, 608/2).