

# STADIUM SAFETY

**JetTrac® Retractable Belt Safety Barrier System**





- >> SAFE
- >> FLEXIBLE
- >> ROBUST

Quickly block off large areas with the industry's longest retractable belt. JetTrac's portability makes it easy to deploy and to store. Cordon off large areas in minutes.



## JetTrac Dual

Quickly block off large areas with the industry's longest retractable belt barrier system, featuring two 65-foot-long retractable belts. Low center of gravity provides easy handling. Built-in wheels.



## JetTrac Shuttle

The JetTrac Shuttle can store and quickly deploy up to three JetTrac Satellite Posts for a total coverage area of 260 linear feet.



## JetTrac Satellite Posts

Instantly add an additional 65 feet of coverage into your JetTrac Barrier solution. Fits into the JetTrac Shuttle for easy deployment and storage. Weighted base.



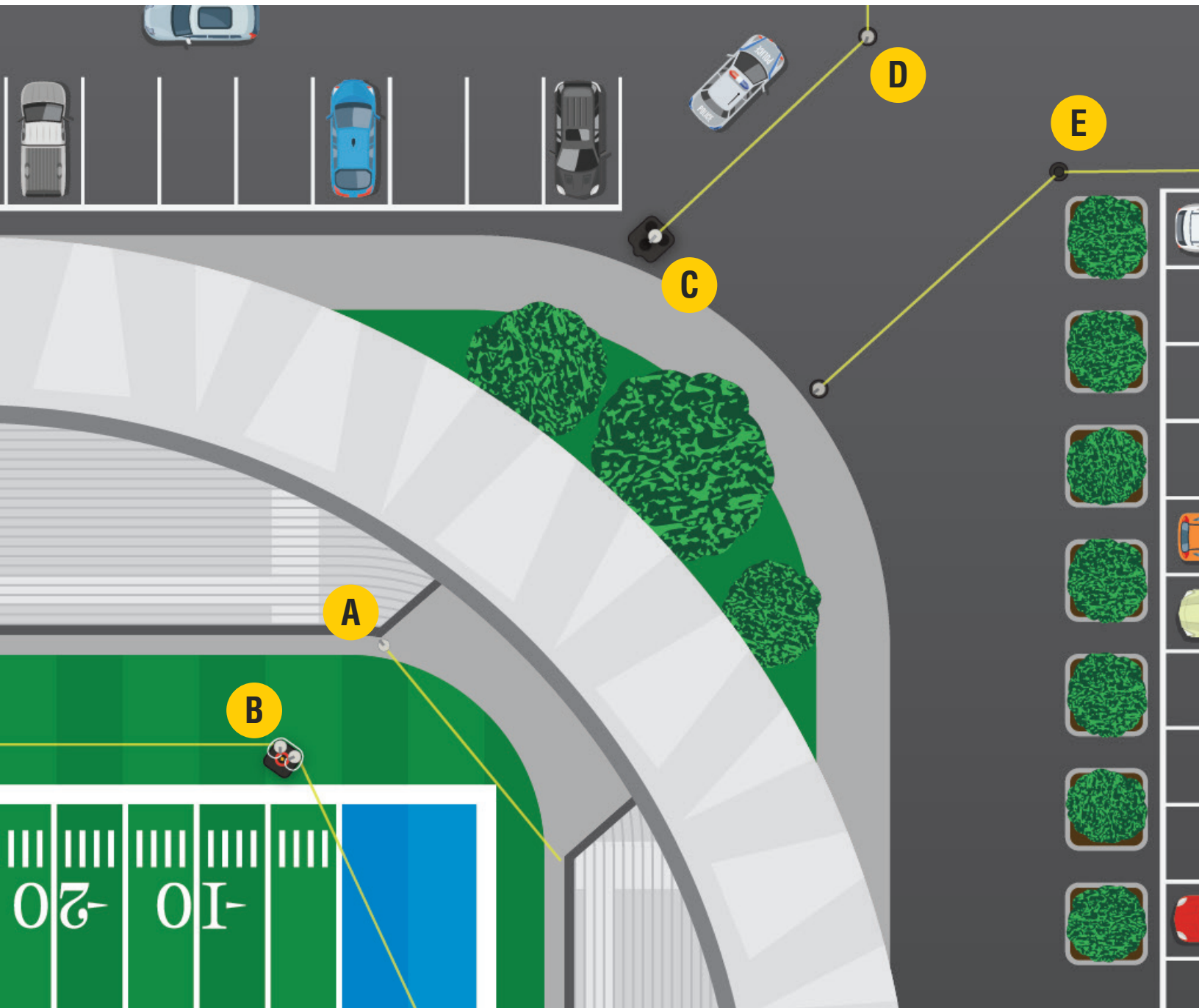
## JetTrac Wall Mount

Create a convenient, always available barrier over an extended area with this swiveling wall mount featuring a 65-foot-long retractable belt.



## Providing instant safety for large areas

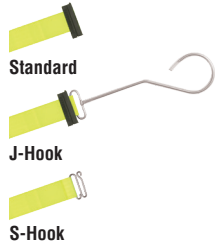
- A** JetTrac Wall Mount
- B** JetTrac Dual
- C** JetTrac Shuttle
- D** JetTrac Satellite Post
- E** JetTrac Receiver Post





# The JetTrac™ Family of Products

All JetTrac mechanisms come with 3 belt end options:



**50-5500\***



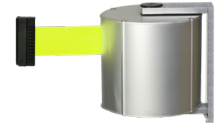
**50-5520\***



**50-5510\***



**50-3055**



**50-5550\***

	JETTRAC™ DUAL*	JETTRAC™ SHUTTLE*	JETTRAC™ SHUTTLE SATELLITE POST*	JETTRAC™ SHUTTLE RECEIVER POST	JETTRAC™ WALL-MOUNT UNIT*
Height	41 inches	41½ inches	40 inches	40 inches	8 inches
Weight	121 lbs.	48 lbs.	50 lbs.	42 lbs.	11 lbs.
Finish	Red (RD), Black (BK)	Wrinkle Black-Post (WB)	Wrinkle Black (WB)	Wrinkle Black (WB)	Satin Aluminum (SA)
Post Diameter	5 inches	2 ¾ inches	2 ¾ inches	2 ¾ inches	N/A
Casing Diameter	6 ¾ inches	6 ¾ inches	6 ¾ inches	N/A	6 ¾ inches
Construction Materials	Aluminum Post, Plastic Base Cover, Aluminum Belt Casing	Plastic Base, Steel Post, Aluminum Belt Casing	Aluminum Post, Cast Iron Base with Plastic Cover Plate, Aluminum Belt Casing	Aluminum Post, Cast Iron Base with Plastic Cover Plate	Aluminum
Base Diameter	23" x 20"	32" x 41"	14 inches	14 inches	N/A
Base Cover	Plastic	N/A	Metal	Metal	N/A
Rubberized Base	N/A	N/A	Standard	Standard	N/A
Belt Color Options	Safety Yellow (FY), Black (BK)	Safety Yellow (FY), Black (BK)	Safety Yellow (FY), Black (BK)	N/A	Safety Yellow (FY), Black (BK)
Belt End Options	Standard (B), S-Hook (S), J-Hook (J)	Standard (B), S-Hook (S), J-Hook (J)	Standard (B), S-Hook (S), J-Hook (J)	N/A	Standard (B), S-Hook (S)
Belt Length	65 feet	65 feet	65 feet	N/A	65 feet
Slow Retracting Belt	Standard	Standard	Standard	N/A	Standard
Beacon	Standard	N/A	N/A	N/A	N/A
Other	Includes Roll Bar Rubber Wheels	Locking Rubber Wheels	Fits Into Shuttle	Fits Into Shuttle	
Extended Warranty	2x Required	Required	Required	n/a	Required

## JetTrac Dual\*

- Two belts for a total coverage area of 130 linear feet
- Solar-powered beacon for low-light conditions
- Swiveling belt mechanisms minimizes belt abrasion
- Weather-resistant, anti-static belts

## JetTrac Shuttle\*

- Stores and transports up to three JetTrac Satellite or Receiver posts
- Shuttle carts quickly link together to form an easily pulled "train"
- Convenient storage even in tight places

## JetTrac Satellite Post\*

- Instantly add an additional 65' coverage into your safety zone
- Works seamlessly with all of our JetTrac products
- Conveniently stores and transports in our JetTrac Shuttle

## JetTrac Wall-Mount\*

- Create a convenient, always available barrier over an extended area with our swiveling wall-mount
- As with all JetTrac products, belts are weather-resistant and anti-static

\*SPECIAL NOTE: Service Contract required with purchase of each product.

Contact Us:



Call  
1.888.285.8605



Email  
sales@lavi.com